

**Walcom®**



ISTRUZIONI  
INSTRUCTIONS  
BEDIENUNGSANLEITUNGEN  
INSTRUCTIONS  
INSTRUCCIONES  
INSTRUÇÕES  
ИНСТРУКЦИИ



IT EN DE FR ES PT RUS

## ■ 360 TRUE LIGHT EVO



**Walcom®**  
SPRAY GUN EVOLUTION

[www.walmec.com](http://www.walmec.com)

MADE IN ITALY

## SAFETY WARNINGS

- Before using the 360 TRUE LIGHT EVO light, carefully read the following warnings, recommendations and instructions for use;
  - Keep these documents together with the 360 TRUE LIGHT EVO light;
  - IT IS FORBIDDEN to soak the 360 TRUE LIGHT EVO system and its battery in any liquid such as water, solvents, detergent solutions or non-neutral pH solutions;
  - The 360 TRUE LIGHT EVO light contains a Li-Ion battery.
- To prevent personal injury, fire or accidental explosions, pay attention to:
- 1- Use only USB power supplies (5V and at least 1A) and the supplied USB-C cable.
- The light DOES NOT work and cannot be used when charging or connected to portable power supplies such as Power Banks;
- 2- Charging must always take place outside ATEX environments, in safe environments and with premises compliant with the law;
  - 3- Charging and use must take place at a temperature between  $0^{\circ}\text{C} \div +35^{\circ}\text{C}$ ;
  - 4- Do not leave the battery discharged for a long period. If the lamp is not used it is recommended to charge it at least every 6 months;
  - 5- The battery must be stored in a dry, humidity-free and ventilated place, at a temperature between  $0^{\circ}\text{C} \div +35^{\circ}\text{C}$ ;
  - 6- Do not leave the device and/or battery under direct sunlight or near heat sources;
  - 7- If you need to replace the battery, pay attention to the positioning of the + and - polarities. After each battery replacement it is necessary to connect (even temporarily) the USB power supply to deactivate the electronic safety device;
  - 8- If during the charging phase the light flashes constantly every 0.5 seconds, immediately disconnect the battery charging cable and proceed to check the battery connections with the metal connectors and the state of integrity/presence of the battery;
  - 9- Do not use batteries with surface defects, insulation peeling, rust or liquid leaks;
  - 10- Do not short-circuit the battery using wires or cables (between the + and - poles);
  - 11- Replace the batteries when the working life of the lamp has decreased by 25-30%;
  - 12- It is recommended to carefully read the instructions and limitations of use relating to the spraygun in use and the paint products in use.

## RISKS OF IMPROPER USE

- The 360 TRUE LIGHT EVO light must be used exclusively by qualified and trained personnel;
- After each cleaning, maintenance and/or repair, battery replacement, make sure that the moving parts are firmly/screwed firmly in place;
- Do not direct the light directly towards the eyes of people or animals;
- Put the 360 TRUE LIGHT EVO light immediately out of service in case of damage or missing components, removing the battery from the body;
- Do not use components or spare parts that are not original Walcom®;
- Do not transform or modify components or parts of the 360 TRUE LIGHT EVO light.

## INTRODUCTION

The 360 TRUE LIGHT EVO light has been designed to be applied to painting spraygun in order to directly illuminate the surface to be painted. Thanks to the LEDs used, the light has a remarkable approximation of the sunlight spectrum.

The system also allows you to adjust the light intensity according to operational needs.

## INSTALLATION

The 360 TRUE LIGHT EVO light is supplied with a partially charged battery, equipped with an electronic safety device: upon first use or after each battery replacement it is necessary to connect (even temporarily) the USB power supply to deactivate the electronic safety device.

Position the 360 TRUE LIGHT EVO light on the aircap ring, making sure that the cap/ring is completely outside the LED protection glass.



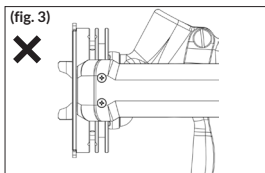
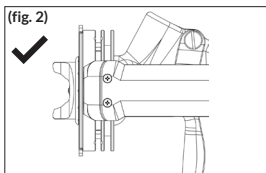
Choose the reduction/adapter to apply inside appropriately of the LED ring, checking that the light is firmly blocked on the ring.  
 For the expected coupling, check the updated table. Check here →  
 If the rubber adapter is damaged or no longer functions clutch, replace it with a new one.



## INSTRUCTIONS FOR USE

Position the 360 TRUE LIGHT EVO light on the ring, making sure that the cap and the initial portion of the ring are positioned completely outside the protective glass (fig.2) and not just partially (fig.3).

Check that the 360 TRUE LIGHT EVO system is firmly locked to the aircap/ring.



It is suggested to position the body on the opposite side to the hand being used (for example for a right-handed person, position the battery body on the left side of the spraygun).

To turn on the light, press the power button; the light will gradually reach the last intensity set, otherwise, in the case of a partially charged battery, it will reach the maximum value allowed by the battery charge (lower than the one previously set). To adjust the light intensity, hold down the power button (first ramp=increase in light intensity, second ramp=reduce light intensity). The light maintains the set intensity even during subsequent restarts.

To turn off the light, short press the power button.

Low battery: during operation, a brief flash of the LEDs means that the battery charge is not sufficient to maintain the set brightness and therefore the light intensity is automatically reduced to maintain the maximum brightness allowed by the remaining battery charge. To avoid flashing, you can manually decrease the light intensity by holding down the power button.

Charging phase: before proceeding with charging, carefully read the SAFETY WARNINGS in order to prevent personal damage, fires or accidental explosions.

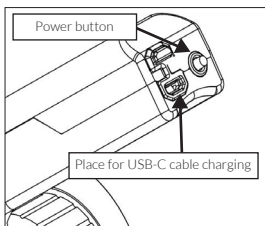
Remove the protective cap of the USB-C connector and connect the supplied cable to the 360 TRUE LIGHT EVO light and to the USB power supply (5V and at least 1A).

During the charging phase the LEDs flash as follows:

- 1 flash every 5 seconds: battery charged from 0% ÷ 33%
- 2 flashes every 5 seconds: battery charged from 33% ÷ 66%
- 3 flashes every 5 seconds: battery charged from 66% ÷ 99%

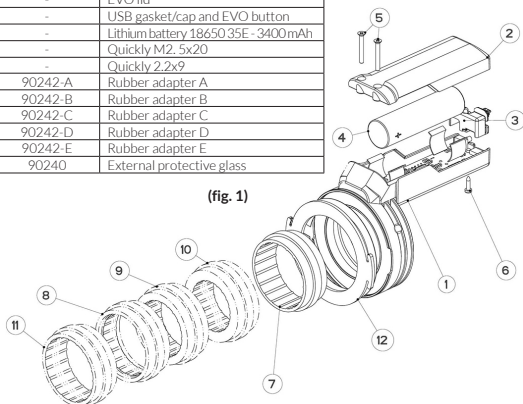
The flashing stops when charging is complete; once charging is complete, remove the cable and reinsert the USB protection cap into its seat.

**⚠ Warning:** if during the charging phase the light flashes constantly every 0.5 seconds, immediately disconnect the battery charging cable and proceed to check the battery connections with the metal connectors and the integrity/presence status of the battery.



## PARTS (fig. 1) Components list:

Item	Spare part code	Description
1	-	Body with LED and EVO board
2	-	EVO lid
3	-	USB gasket/cap and EVO button
4	-	Lithium battery 18650 35E - 3400mAh
5	-	Quickly M2. 5x20
6	-	Quickly 2.2x9
7	90242-A	Rubber adapter A
(8)	90242-B	Rubber adapter B
(9)	90242-C	Rubber adapter C
(10)	90242-D	Rubber adapter D
(11)	90242-E	Rubber adapter E
12	90240	External protective glass



## TECHNICAL DATA

Operating temperature	0° C +35°C
Maximum weight with battery inserted	156 g
Internal diameter reductions (refer to the link indicated in section 3. Installation for the relevant reduction/spraygun association)	A= 42.5 mm E= 41.5 mm B= 40 mm C= 36.5 mm D= 33 mm
Luminous flux (range)	200 ÷ 600 lumen
Color temperature	6500 K
CRI	>= 97 CRI at maximum light intensity
Internal battery	Li-Ion, 18650, 3400 mAh
Charging time (from completely discharged battery)	4/6 hours (with 5V power supply and at least 1 A)
Average number of complete charging cycles	300 ÷ 500

## CLEANING

IT IS FORBIDDEN to soak the 360 TRUE LIGHT EVO light, the battery, and spare parts (rubber adapters and glass) in liquids, such as solvents/cleaning solutions/water, etc.

Immediately at the end of the application, clean the residues/dust deposited only on the surface parts, before they are catalysed, using NON-ABRASIVE cloths damp with neutral pH detergent solutions. Do not use acids, caustic solutions, bases, paint strippers, unsuitable regenerators or other aggressive detergents. Do not use abrasive products or damp cloths containing acids, alkaline solutions or petrol.

## SCHEDULED MAINTENANCE

Part	Operation	Frequency
Cleaning the protective glass support	Clean the protective glass with a non-abrasive cloth, moistened with a neutral pH detergent solution (the Walcom Paint Remover Ref. 90261 kit is recommended)	Every use
Cleaning the body and rubber reduction rings	Clean with a non-abrasive cloth, moistened with a neutral pH detergent solution (we recommend the Walcom Paint Remover kit Ref. 90261)	Every use
Battery charging cycle	Perform a complete charging cycle	6 months
Check tightening screws body/LED ring and cover/body	Check that the body closing screws on the ring and cover are correctly tightened	1 month

## OPERATING MALFUNCTIONS AND REMOVAL OF THE CAUSES

Problem	Causes	Solution
The light does not turn on	Low battery	Charge the battery
The light does not turn on and does not charge	Battery does not make contact with the metal connectors or is inserted incorrectly	Check that the metal connectors of the battery holder are in contact with the relevant battery poles and that the battery is correctly inserted
Battery life is reduced	Battery to be replaced	Replace the battery
The protective glass is damaged	Ruined/scratched slide	Replace the protective glass
The light does not get stuck in the airbrush	Use of incorrect reduction;  The rubber reducer is worn or damaged	Choose the size of the most suitable rubber reduction;  Replace the reduction with a new one
During the charging phase the light flashes constantly	Battery disconnected or not working	Check that the metal connectors of the battery holder are in contact with the relevant battery poles and that the battery is correctly inserted

## CARE, MAINTENANCE AND REMOVAL FROM SERVICE

In order to guarantee the functioning of the 360 TRUE LIGHT EVO light over time, carry out cleaning and maintenance at regular intervals, scrupulously following the maintenance and cleaning plan.

It is advisable to keep the protective glass and the internal glass of the LEDs clean, together with regular care/maintenance and storage of the product.

Pay attention to the management of the battery, in terms of periodic charges and temperatures of use: inconsistent use and with temperature peaks compromises the life of the battery and the relative number of recharge cycles.

Follow local regulations/legislation for the disposal of the battery and the product when it is taken out of service.

**Walcom®**



**MADE IN ITALY**

[www.waltec.com](http://www.waltec.com)

**WALTEC S.p.A.**

**DIREZIONE / HEADQUARTERS**

Via Trieste, 10 31025 S. Lucia di Piave (TV) Italy Tel. +39 0438 6611 / Fax +39 0438 661333

e-mail: [waltec@waltec.com](mailto:waltec@waltec.com) Web: [www.waltec.com](http://www.waltec.com)

**SEDE LEGALE / REGISTERED OFFICE** Corso Venezia, 61 20121 Milano (MI) Italy

**SEDE PRODUTTIVA / PRODUCTION PLANT** Viale della Vittoria 25054 Calcio (BG) Italy

WI58/24